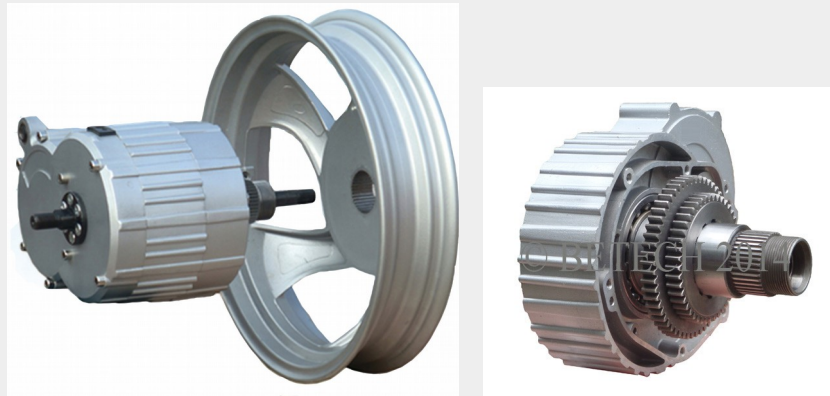




When Performance Matters

"GEARED ELECTRIC MOTOR"



"Climbing above all"

Features and Advantages:

- ✓ Available in 500W, 800W and 1000W, 60V and 72V.
- ✓ Integrated 2 or 3 Gears.
- ✓ Super Efficient Brushless DC Electric Motor.
- ✓ Integrated Intelligent Micro Computer Controller.
- ✓ Electronic Switch for Gear Change with LED Display.
- ✓ Over 45 degree angle of climb for hills and mountains.
- ✓ Our 500W replaces 1000W and our 1000W replaces 2000W common hub motors.
- ✓ First Gear more powerful than 5000W. Second Gear max. speed 75km/h.



Weather proof, IP65.



Unique Air Cooling Aluminium Wheel Design. Propelling Air Through.

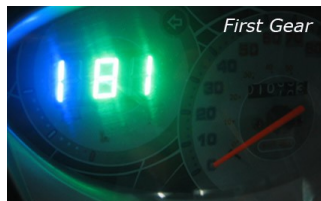


Easy Maintenance and Repair. Geared Electric Motor can be separated from wheel.



Now Electric Scooters can have gears just like any other transportation vehicles.

"Performance above all"



BETECH LIMITED, 2/F, Eton Tower, 8 Hysan Avenue, Causeway Bay, HONG KONG
Tel: +852 2836 5888 Fax: +852 2836 5333 www.betech-mo.com